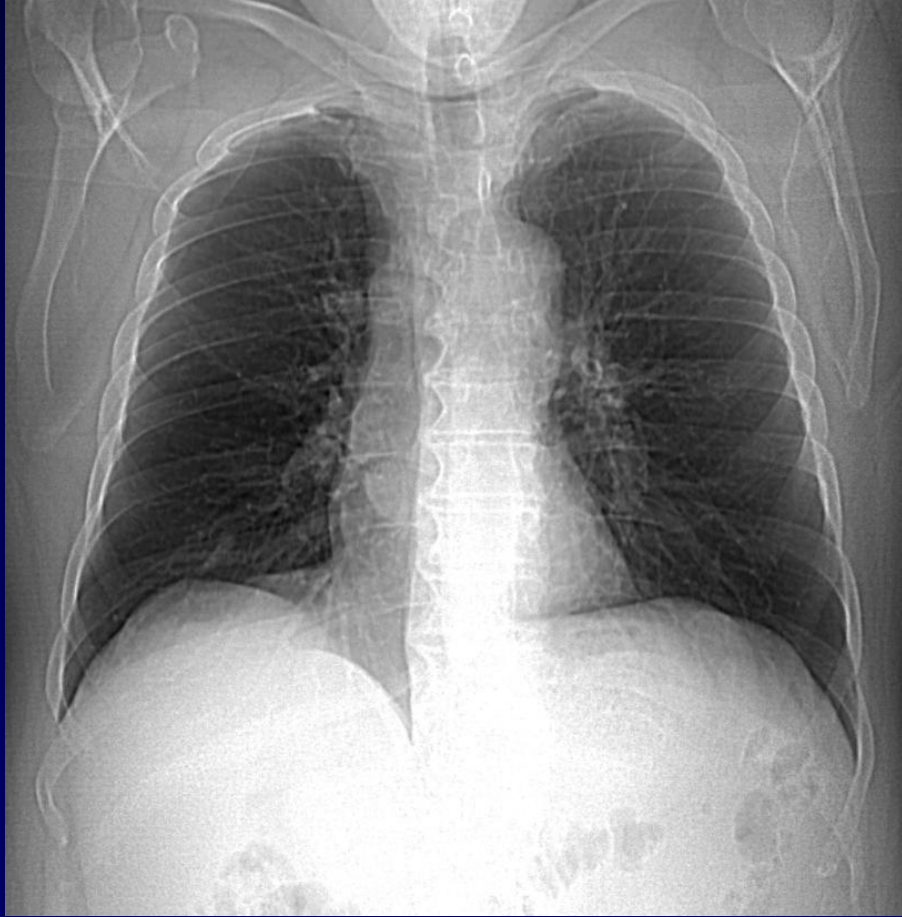


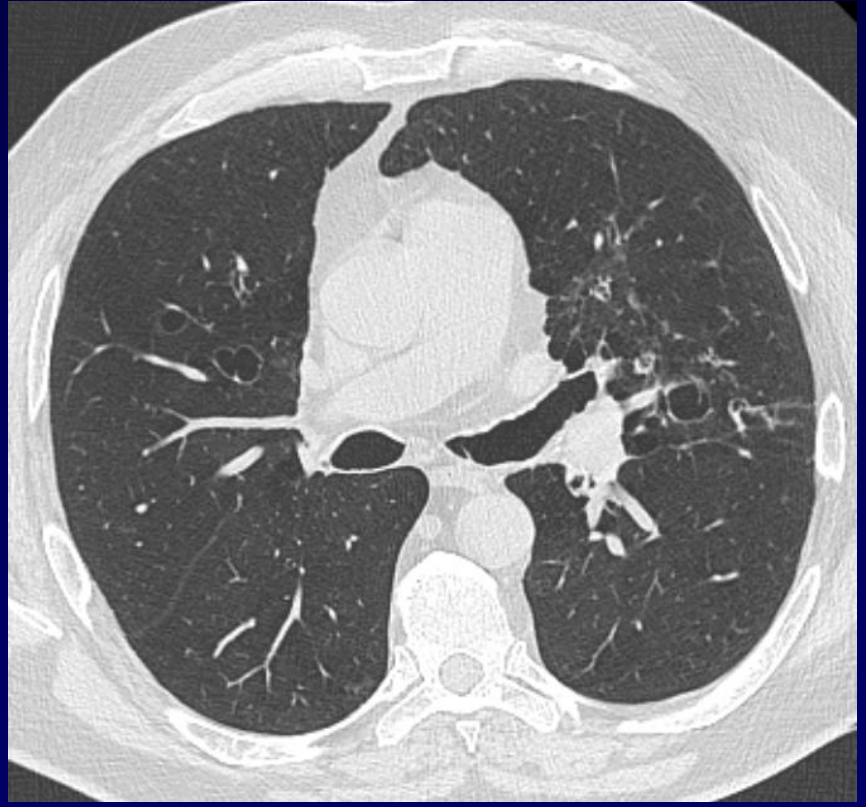
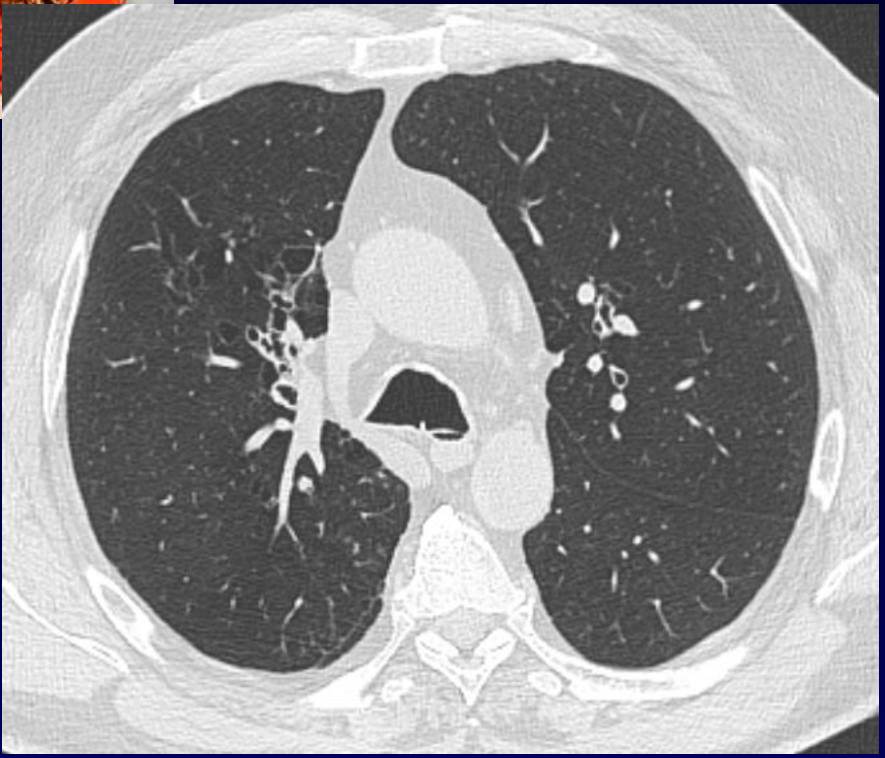


A Lacout

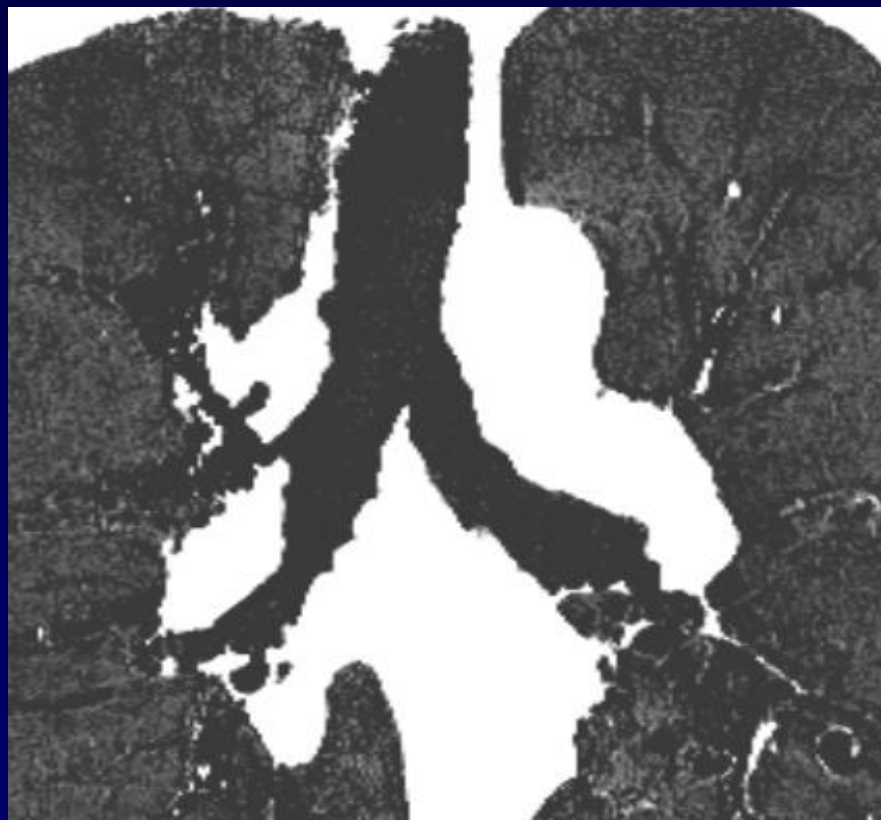
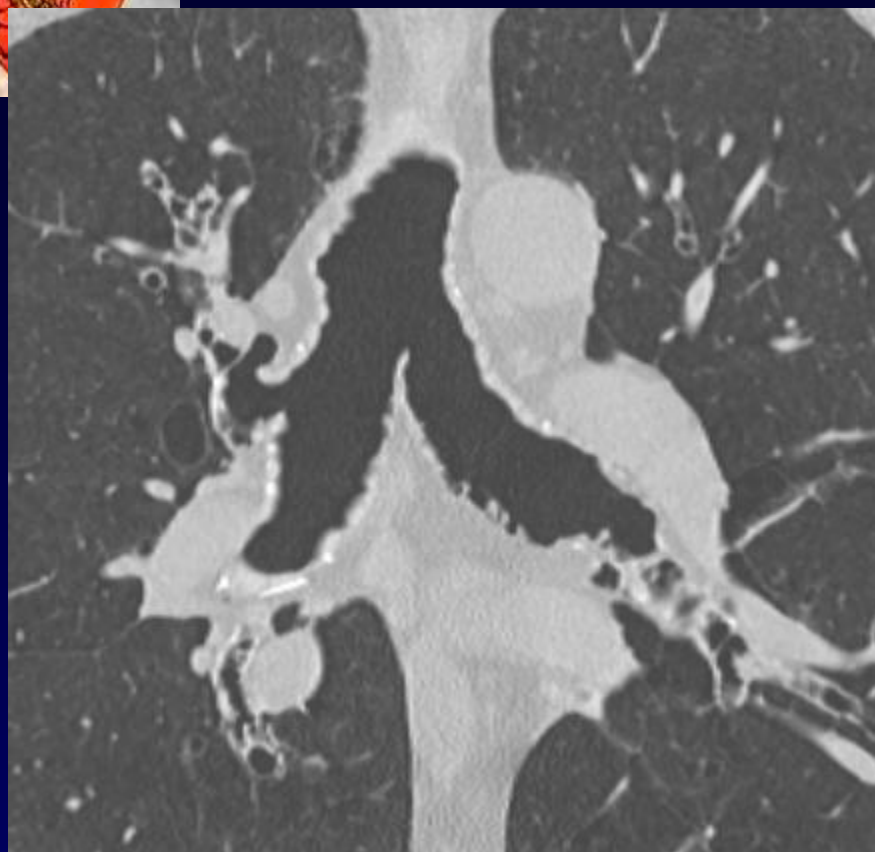
Homme de 56 ans

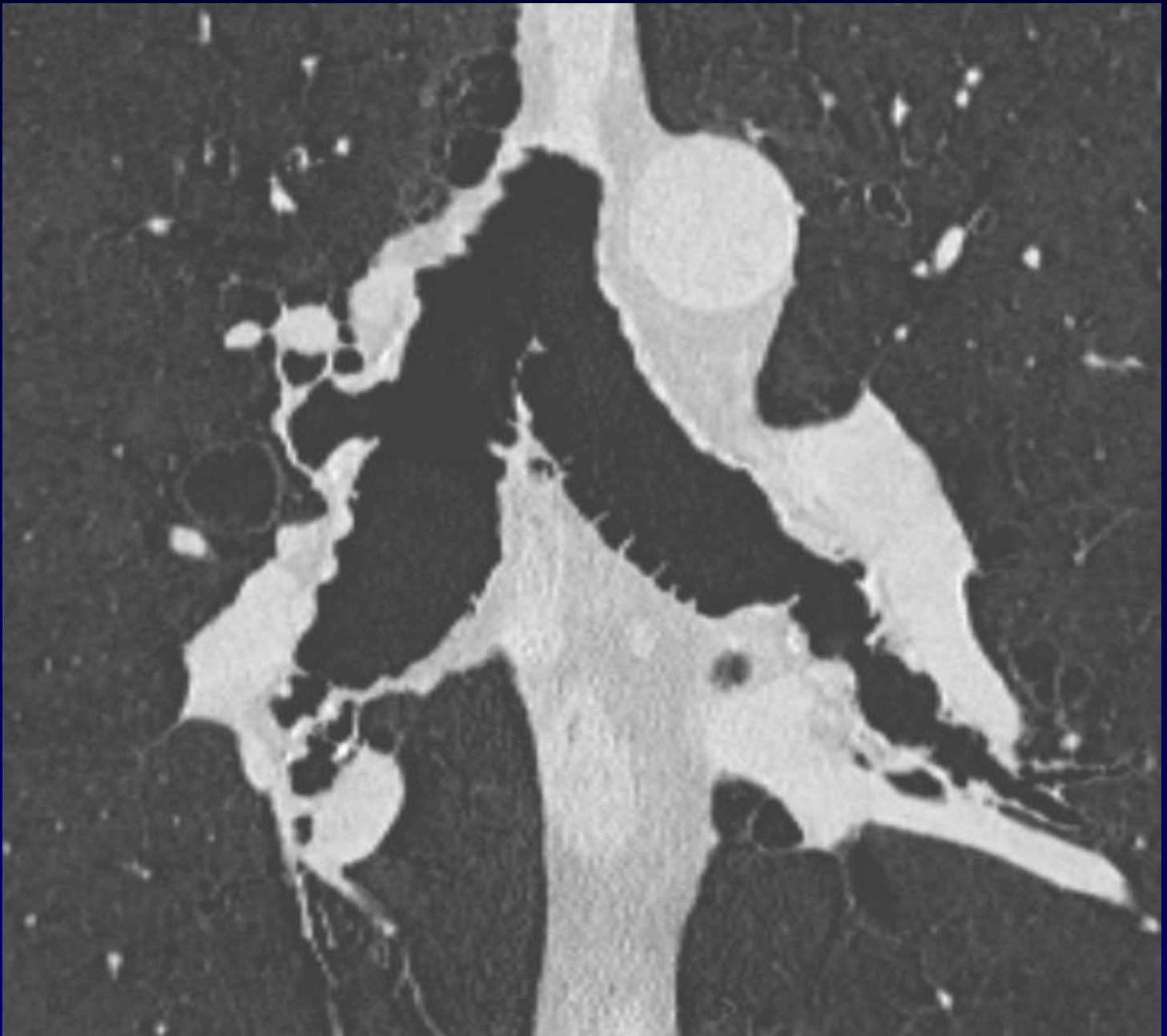
Bilan de DDB (connues)

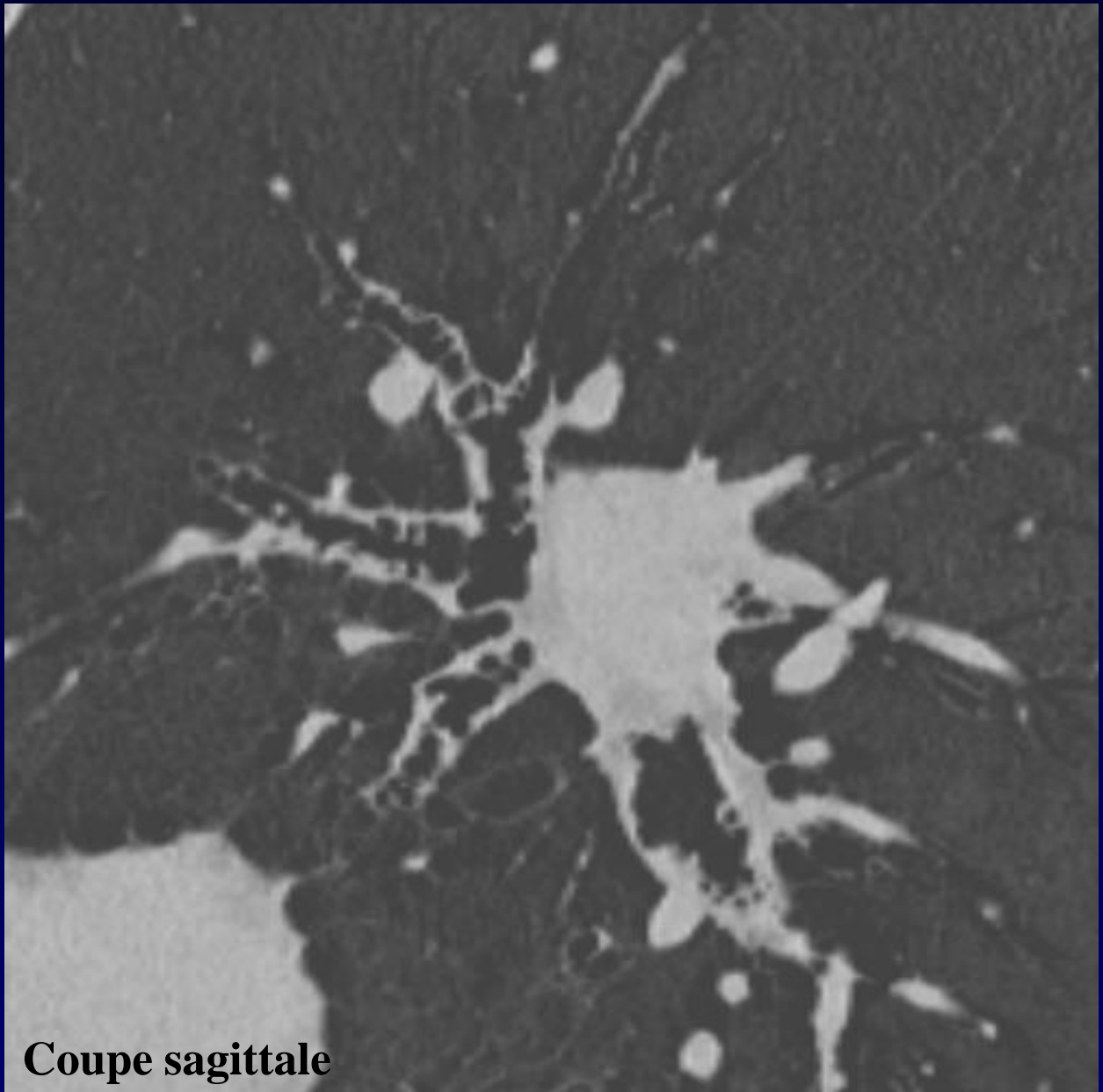












Coupe sagittale



Diagnostic ?



Syndrome de Mounier Kuhn

Trachéo-bronchomégalie proximale



Syndrome de Mounier Kuhn

Congénital

Dilatation de la trachée et des bronches souches

Cause : atrophie ou absence de fibres élastiques

95 % sont des hommes

Autosomique récessif

**Dilatation kystique entre les cartilages trachéo bronchiques
(majoration en Valsalva)**